

Rubber Molded Wellhead Feedthru

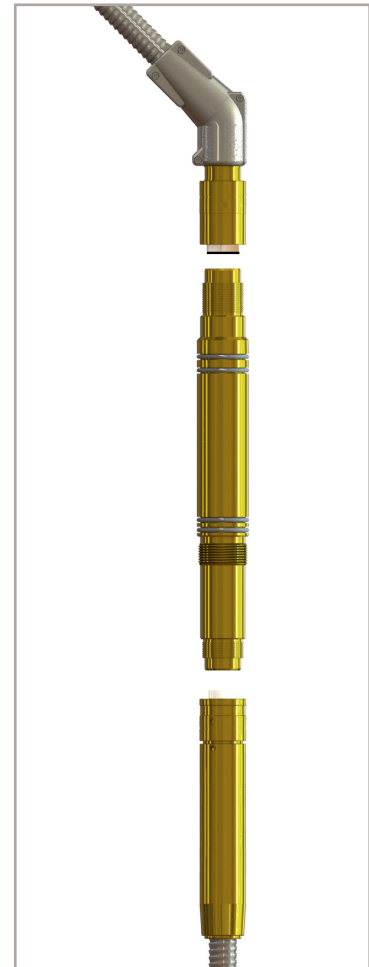
3 piece system



Long life, superior performance

This design has been optimized for long life and utmost safety with approvals for hazardous locations under Class 1 Division 1, ATEX and IEC.

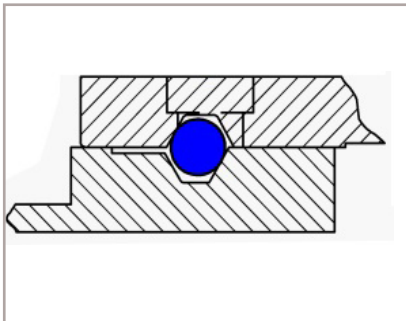
Ball bearing coupling ring on surface connectors	Provides the high reliability, makes installation easier, and increases safety of the connector
Replaceable sealing elements on surface connectors.	Allows for safe surface connector re-use, saving time and money.
Flexible lower connector configurations	Available in field attachable or factory molded lower connectors, providing the utmost flexibility to meet your installation needs.



Rubber molded Wellhead Feedthru: surface, penetrator, and downhole connectors

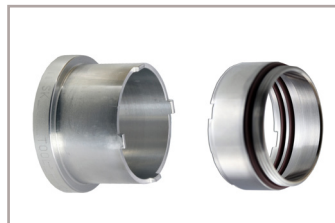
Safe and Easy to Use

The Rubber Molded 3-Piece System is a vulcanized elastomeric system, long recognized for superior performance. The three piece system offer the simplest installation and work-over procedures. Our Rubber Molded 3-Piece solutions are one of several technologies designed for safety, reliability and ease of use.



The Surface Connectors are supplied with coupling rings retained by ball bearings. This retention method ensures longer life, better resistance to corrosion, and easier engagement.

The Surface Connectors are also supplied with replaceable sealing elements. These seals consist of O-rings that are easily replaced with a special tool, making re-use both easy and safe.



Specification Chart

Electrical	5 kV, 25-215 A
Temperature	300 °F (149 °C)
Pressure	5,000 psi
Approvals	Approved for Class I, Division 1, Groups C & D Hazardous Locations, USA and Canada. ATEX and IEC for Hazardous Locations.